

THE BANTOCK

A modern detached 4 bedroomed home



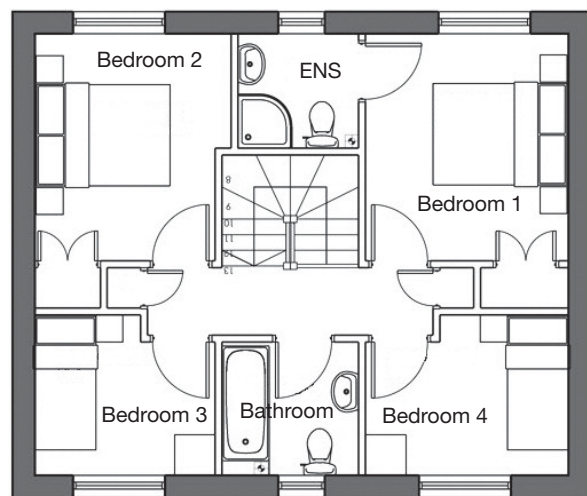
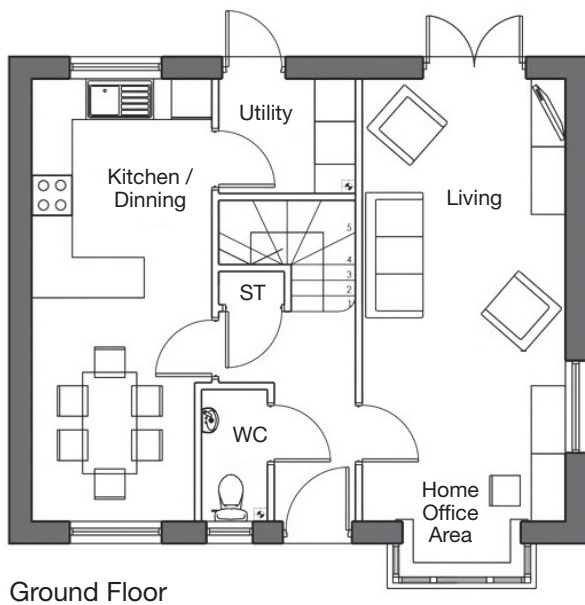
The Bantock is a beautiful four bedroom detached home consisting of spacious living room running along the whole length of the house, open plan kitchen/diner with separate utility room and a separate WC to the ground floor.

The first floor consists of four good sized bedrooms and a family bathroom. The property also benefits from an en-suite and fitted wardrobes to the master bedroom as well as fitted wardrobes to bedroom two. Parking is also included.

THE BANTOCK

Specification Sheet

The Bantock total floor area is 104m²



Telephone: 01902 550500 • Email: info@wvliving.co.uk Web: wvliving.co.uk

Specifications: For exact plot specification including details of external and internal finishes, dimensions and floor plan differences, please consult one of our sales executives.