

THE BEECH

a fabulous 4 bedroomed detached home



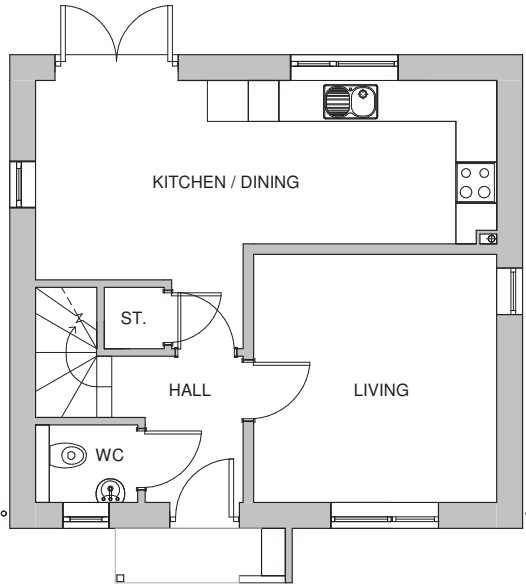
The Beech is a superb four bedroom home laid out over three floors. The ground floor features a spacious kitchen/diner with French doors leading into the garden. There is also a separate living room and a guest WC to the ground floor.

The first floor consists of two double bedrooms, the family bathroom and an office area.

The top floor contains two further bedrooms, including one with an en-suite. Both bedrooms on this level include storage in the eaves. The home also includes off-street parking.

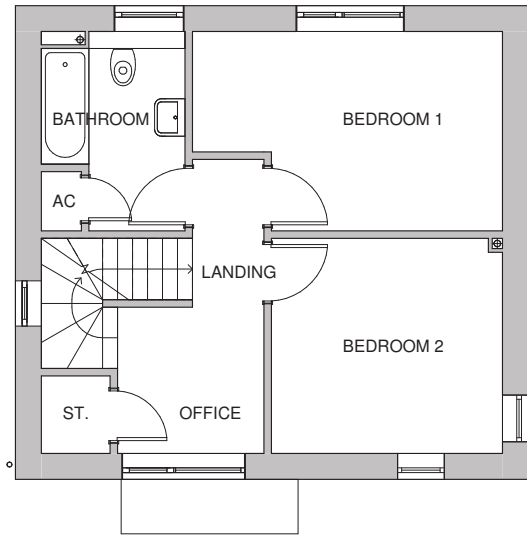
THE BEECH

4 BEDROOM DETACHED HOUSE



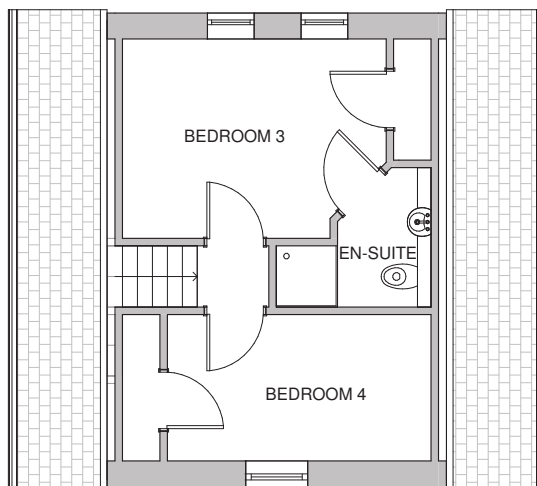
Ground Floor Room dimensions

Living	3.57m x 3.65m 11'9" x 12'0"
Kitchen/Dining	6.78m x 2.93m 22'3" x 9'7"



First Floor Room dimensions

Bedroom 1	4.56m x 2.93m 14'5" x 9'7"
Bedroom 2	3.40m x 3.16m 11'2" x 10'4"
Office	2.15m x 1.25m 7'1" x 4'1"



Second Floor Room dimensions

Bedroom 3	4.54m x 2.93m 14'11" x 9'7"
Bedroom 4	4.54m x 2.15m 14'11" x 7'1"

Specifications: This information is for guidance only and does not form any part of a contract or constitute a warranty. Illustrations are of typical elevations and may vary. Floor plan are not drawn to scale. Room dimensions are subject to a +/- 50mm(2") tolerance and are based on a maximum dimensions in a each room. Please consult your sales advisor on site for specific elevations, room dimensions and external finishes.