

THE HAYWARD

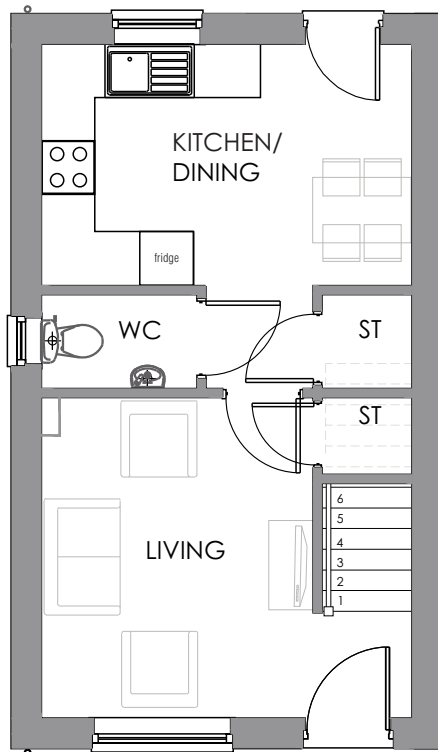
A modern 2 bedroomed semi-detached home



The Hayward is a two bedroom semi-detached home with separate living room, open plan kitchen/diner and a separate WC to the ground floor.

The first floor consists of two bedrooms and a family bathroom. The home also benefits from off-street parking.

THE HAYWARD



Ground Floor

Room dimensions

Kitchen/Dining

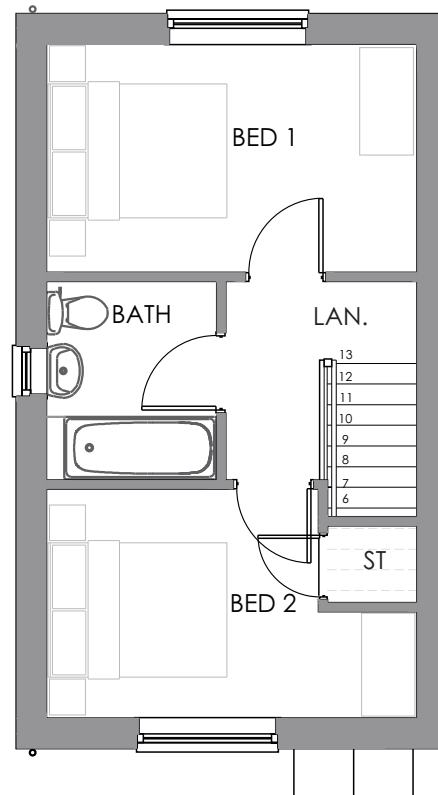
4.15m x 2.70m

13'7" x 8'10"

Living

4.15m x 2.57m

13'7" x 11'9"



First Floor

Room dimensions

Bedroom 1

4.15m x 2.57m

13'7" x 8'5"

Bedroom 2

4.15m x 2.57m

13'7" x 8'4"

TOP SPEC LIST

- Turf front and rear
- Exterior lighting front and rear
- Close panel fencing around boundary
- Gas central heating
- Fully fitted Symphony kitchen with soft closer doors and drawers
- Built in stainless steel electric oven, gas hob and extractor hood
- Contemporary family bathroom
- Downstairs cloakroom
- Full height tiling to the bath and *shower cubicles (*where applicable)
- Allocated parking space

Specifications: This information is for guidance only and does not form any part of a contract or constitute a warranty.

Illustrations are of typical elevations and may vary. Floor plan are not drawn to scale.

Room dimensions are subject to a +/- 50mm(2") tolerance and are based on a maximum dimensions in a each room.

Please consult your sales advisor on site for specific elevations, room dimensions and external finishes.