

THE MAPLE

a contemporary 1 bedroomed bungalow



The Maple is beautiful one-bedroom bungalow.

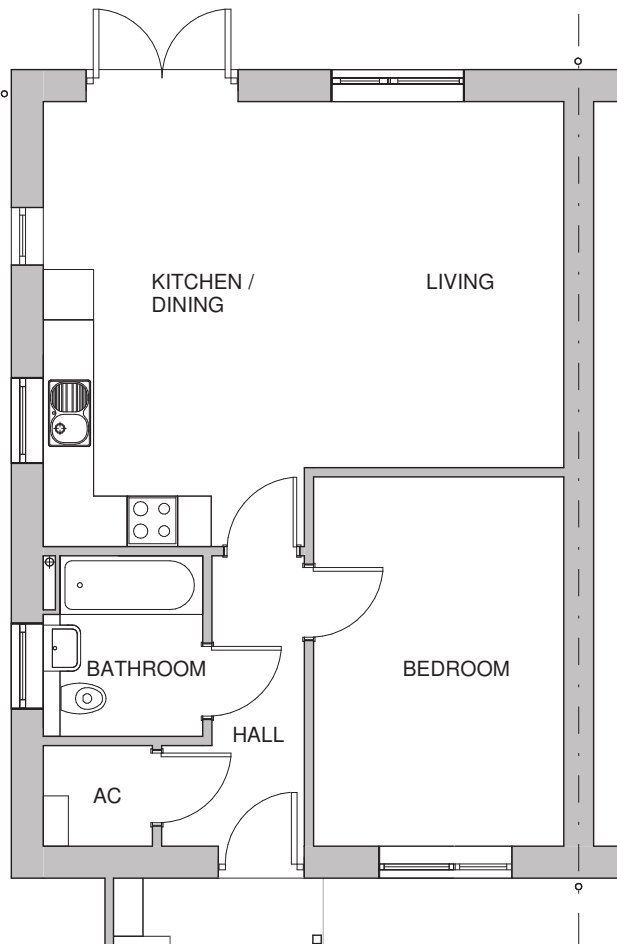
A rare opportunity to purchase this stunning property which includes a spacious open plan diner/kitchen/living room with French doors leading into the garden.

Off the main entrance hall are located the expansive bedroom and the bathroom.

The home also benefits from off-street parking

THE MAPLE

1 BEDROOM BUNGALOW



Ground Floor

Room dimensions

Living	3.09m x 4.36m 10'2" x 14'4"
Kitchen/Dining	3.11m x 5.30m 10'2" x 17'5"
Bedroom	2.98m x 4.40m 9'9" x 14'5"

Specifications: This information is for guidance only and does not form any part of a contract or constitute a warranty.

Illustrations are of typical elevations and may vary. Floor plan are not drawn to scale.

Room dimensions are subject to a +/- 50mm(2") tolerance and are based on a maximum dimensions in a each room.

Please consult your sales advisor on site for specific elevations, room dimensions and external finishes.