

THE MOSELEY

A stylish 4 bedroomed detached home



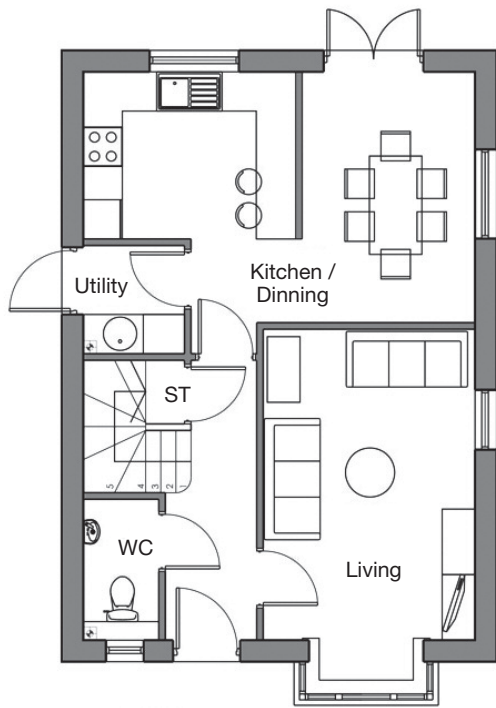
The Moseley is stunning four bedroom home featuring a spacious kitchen/diner, living room and a separate WC to the ground floor.

The first floor consists of four bedrooms and a family bathroom, in addition the property benefits from an en-suite and fitted wardrobe to the master bedroom. Off street parking is also included.

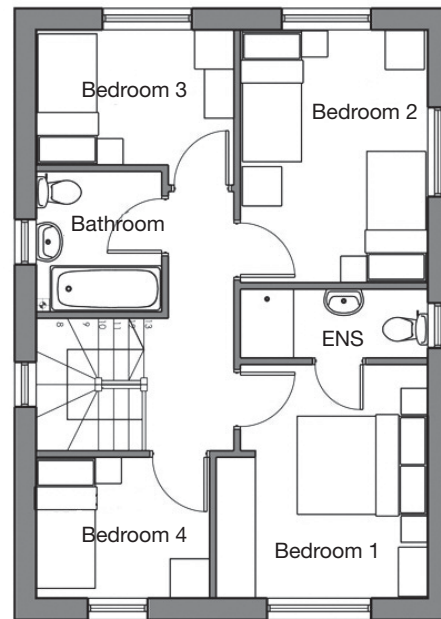
THE MOSELEY

Specification Sheet

The Moseley total floor area is 104.6m²



Ground Floor



First Floor



Telephone: 01902 550500 • Email: info@wvliving.co.uk Web: wvliving.co.uk

Specifications: For exact plot specification including details of external and internal finishes, dimensions and floor plan differences, please consult one of our sales executives.