

THE NEWBOLT

A modern 3 bedroomed semi-detached home



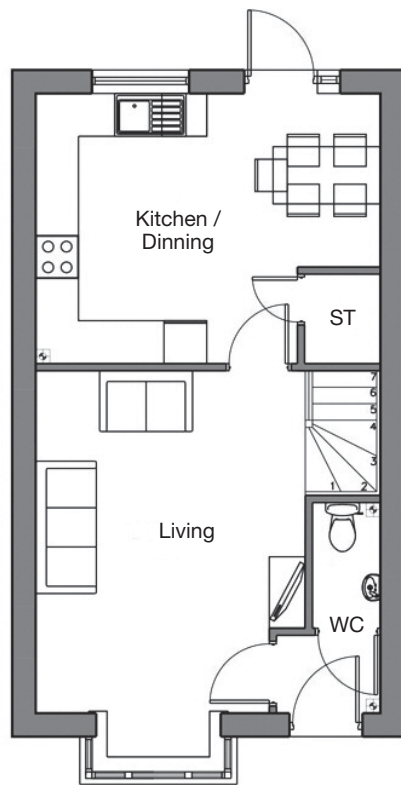
The Newbolt is a stunning three bedroom home that offers an open plan kitchen/diner, separate living room and WC to the ground floor.

The first floor consists of three bedrooms and a family bathroom, with the master bedroom benefitting from an en-suite and storage space. The home also benefits from an off-street parking space.

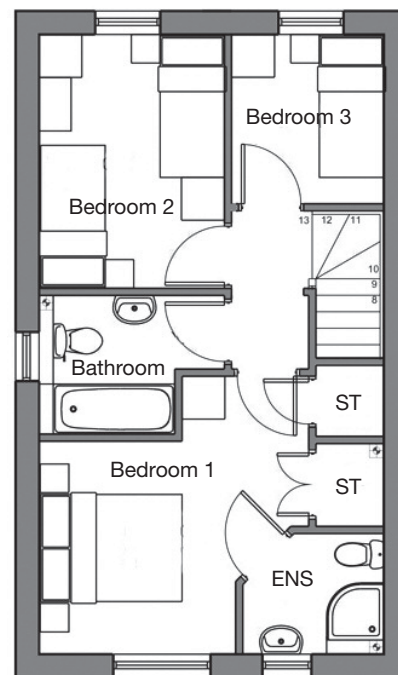
THE NEWBOLT

Specification Sheet

The Newbolt total floor area is 84.6m²



Ground Floor



First Floor



Telephone: 01902 550500 • Email: info@wvliving.co.uk Web: wvliving.co.uk

Specifications: For exact plot specification including details of external and internal finishes, dimensions and floor plan differences, please consult one of our sales executives.