

# THE PELHAM

*A stunning 3 bedroomed detached home*



**The Pelham** is a stunning three bedroom home that offers an open plan kitchen/diner, spacious separate living room and WC to the ground floor.

The first floor consists of three good sized bedrooms and a family bathroom, the master bedroom benefits from an en-suite and two of the bedrooms include fitted wardrobes. The home also benefits from an off-street parking space.

# THE PELHAM

## Specification Sheet

The Pelham total floor area is 85.6m<sup>2</sup>



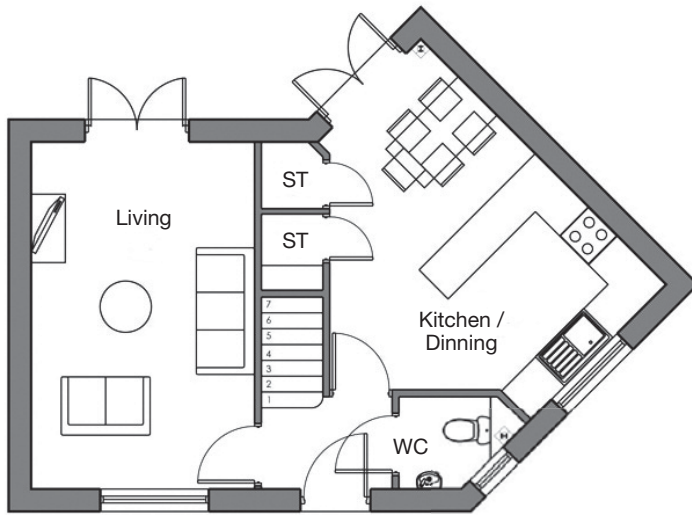
Front Elevation



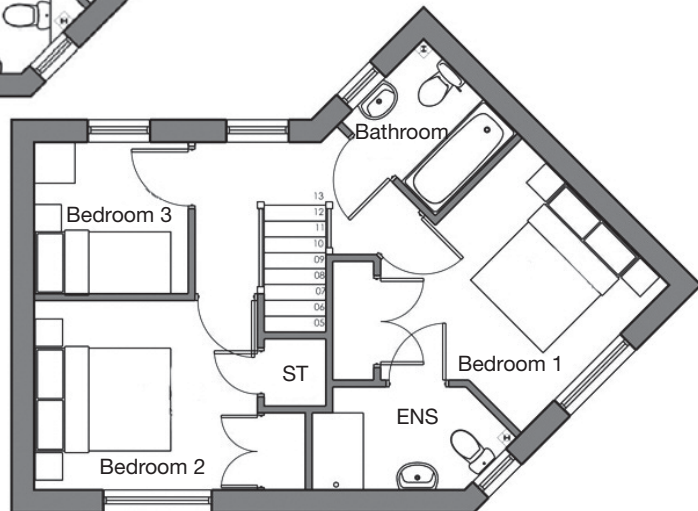
Side Elevation



Rear Elevation



Ground Floor



First Floor



Telephone: 01902 550500 • Email: [info@wvliving.co.uk](mailto:info@wvliving.co.uk) • Web: [wvliving.co.uk](http://wvliving.co.uk)

*Specifications: For exact plot specification including details of external and internal finishes, dimensions and floor plan differences, please consult one of our sales executives.*