

THE CHESTNUT

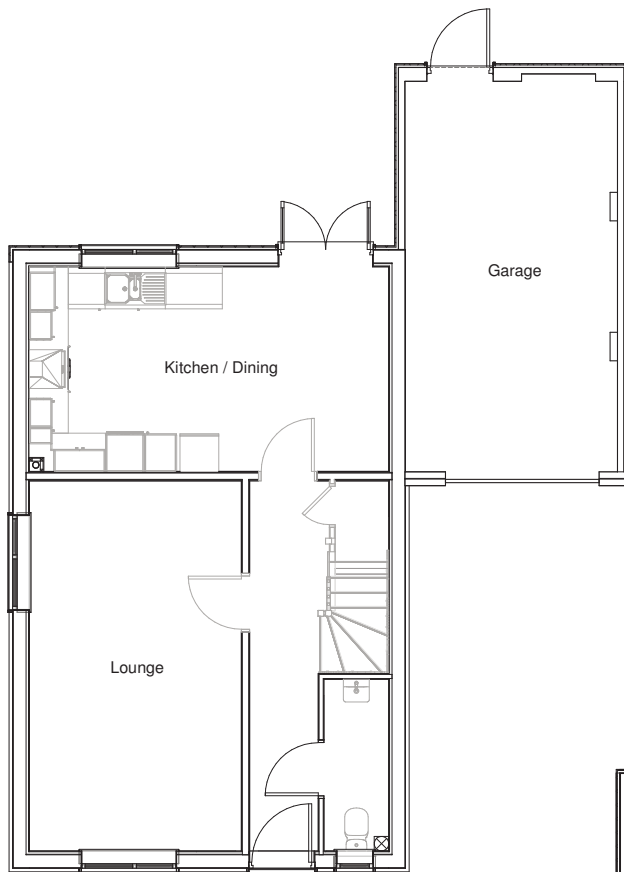


The Chestnut is a traditional family home. On the ground floor the generous living room benefits from dual aspect windows making it light and airy. Kitchen/dining room provides the perfect setting with French doors that lead into the garden. The Chestnut also features a cloak room to the ground floor off the hallway.

To the first floor are four bedrooms and family bathroom. Bedroom one features an en-suite with shower. The home also features an attached garage to the side, with direct access to the garden.

THE CHESTNUT

4 BEDROOM HOUSE



Ground Floor

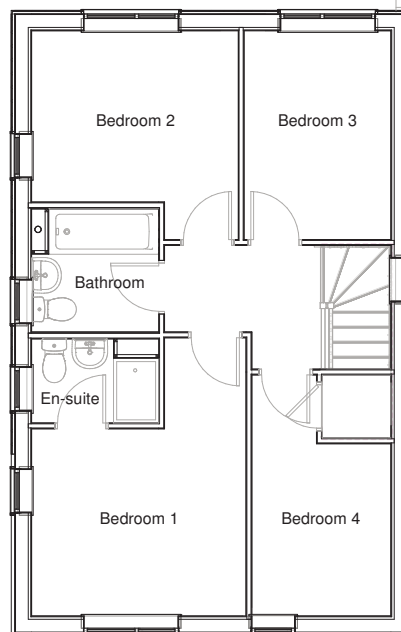
Room dimensions

Lounge	3.27m x 5.71m 10'9" x 18'9"
Kitchen / Dining	5.55m x 3.16m 18'3" x 10'4"

First Floor

Room dimensions

Bedroom 1	3.31m x 4.30m 10'10" x 14'1"
Bedroom 2	3.19m x 3.23m 10'6" x 10'7"
Bedroom 3	2.27m x 3.23m 7'5" x 10'7"
Bedroom 4	2.15m x 3.72m 7'1" x 12'3"



Specifications: This information is for guidance only and does not form any part of a contract or constitute a warranty.

Illustrations are of typical elevations and may vary. Floor plan are not drawn to scale.

Room dimensions are subject to a +/- 50mm(2") tolerance and are based on a maximum dimensions in a each room.

Please contact your sales consultant on site for specific elevations, room dimensions and external finishes.