

THE OAK

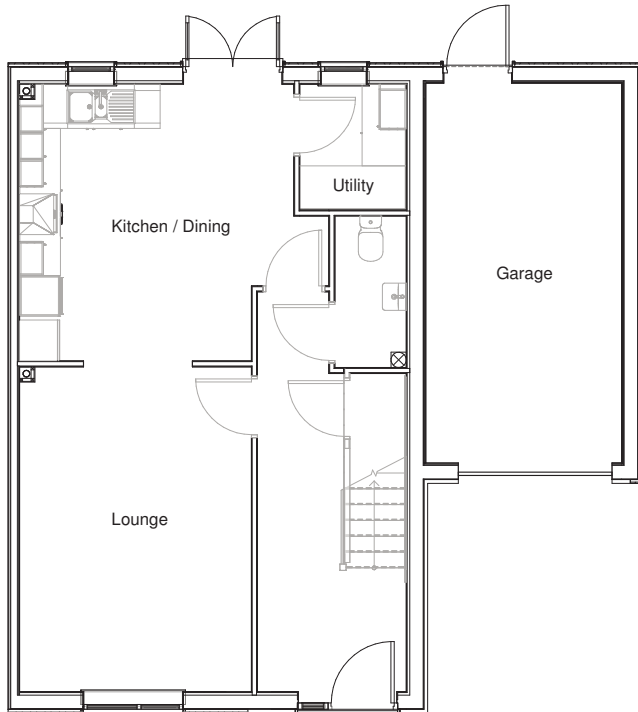


The Oak has been designed to offer flexible family living. The ground floor features an open plan lounge to the front with a kitchen/dining room to the rear with French doors leading to the garden. The Oak also benefits from a utility room.

To the first floor are four bedrooms. Bedroom one includes an en-suite with shower. The home also features an attached garage to the side, with direct access to the garden.

THE OAK

4 BEDROOM HOUSE



Ground Floor

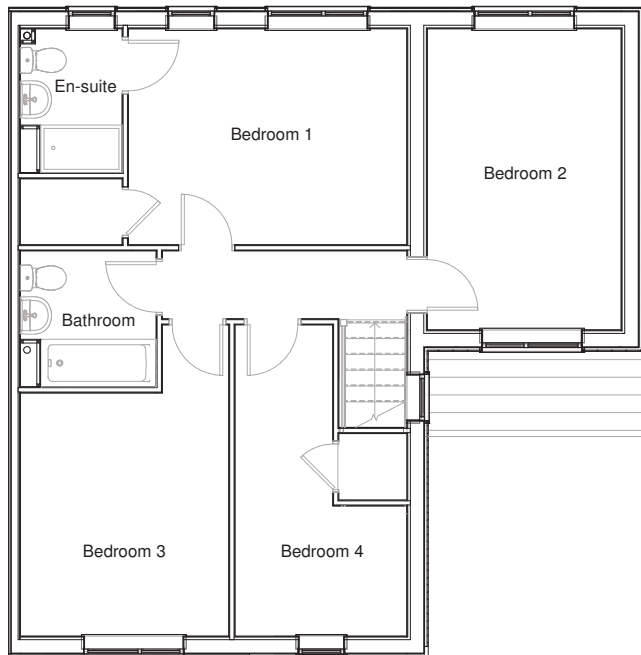
Room dimensions

Lounge	3.41m x 4.77m 11'2" x 15'8"
Kitchen / Dining	4.03m x 4.06m 13'3" x 13'4"

First Floor

Room dimensions

Bedroom 1	4.09m x 3.17m 13'5" x 10'5"
Bedroom 2	2.85m x 4.43m 9'4" x 14'6"
Bedroom 3	3.07m x 3.57m 10'1" x 11'9"
Bedroom 4	2.53m x 4.57m 8'4" x 15'0"



Specifications: This information is for guidance only and does not form any part of a contract or constitute a warranty.

Illustrations are of typical elevations and may vary. Floor plan are not drawn to scale.

Room dimensions are subject to a +/- 50mm(2") tolerance and are based on a maximum dimensions in each room.

Please contact your sales consultant on site for specific elevations, room dimensions and external finishes.