

# THE WIGHTWICK

*A beautiful 3 bedroomed detached home*

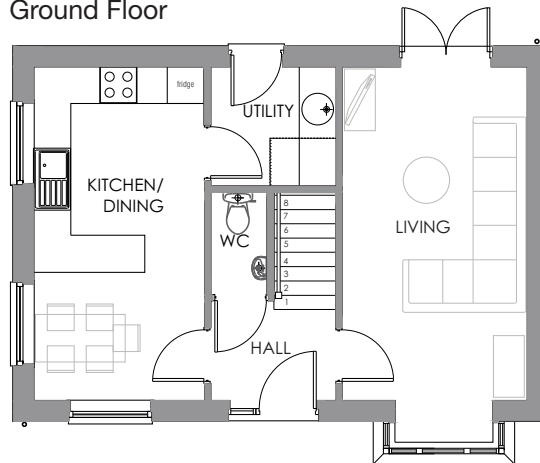


**The Wightwick** is a three bedroom home that offers an open plan kitchen/diner with separate utility room, a spacious living room and WC to the ground floor.

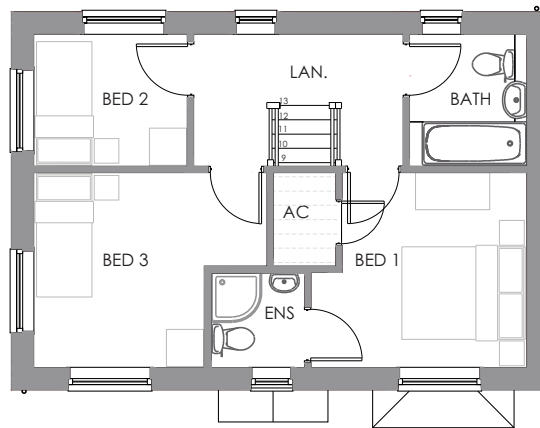
The first floor consists of three good sized bedrooms and a family bathroom, the master bedroom benefits from an en-suite. The home also benefits from off-street parking.

# THE WIGHTWICK

Ground Floor



First Floor



## Ground Floor

### Room dimensions

Kitchen/Dining

2.77m x 5.41m

9'1" x 17'9"

Living

3.07m x 5.41m

9'10" x 17'9"

## First Floor

### Room dimensions

Bedroom 1

3.07m x 3.16m

9'10" x 10'4"

Bedroom 2

2.50m x 2.15m

8'2" x 7'1"

Bedroom 3

2.77m x 3.16m

9'1" x 10'4"

## TOP SPEC LIST

- Turf front and rear
- Exterior lighting front and rear
- Close panel fencing around boundary
- Gas central heating
- Fully fitted Symphony kitchen with soft closer doors and drawers
- Built in stainless steel electric oven, gas hob and extractor hood
- Contemporary family bathroom
- Downstairs cloakroom
- Full height tiling to the bath and \*shower cubicles (\*where applicable)
- Allocated parking space

*Specifications: This information is for guidance only and does not form any part of a contract or constitute a warranty.*

*Illustrations are of typical elevations and may vary. Floor plan are not drawn to scale.*

*Room dimensions are subject to a +/- 50mm(2") tolerance and are based on a maximum dimensions in a each room.*

*Please consult your sales advisor on site for specific elevations, room dimensions and external finishes.*