

THE WILLOW

a stylish 2 bedroomed semi-detached home

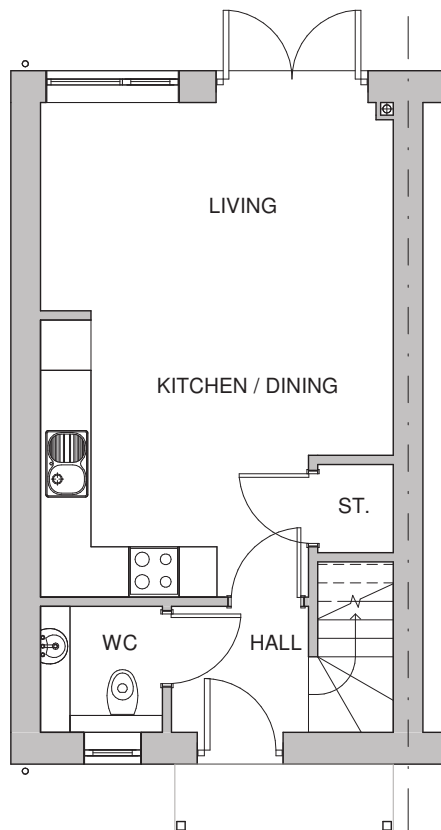


The Willow is a two-bedroom semi-detached home with a spacious open plan diner/kitchen/living room with French doors leading into the garden. There is a storage space leading off the living space as well as separate guest WC to the ground floor.

The first floor consists of two bedrooms and a family bathroom. The home also benefits from off-street parking.

THE WILLOW

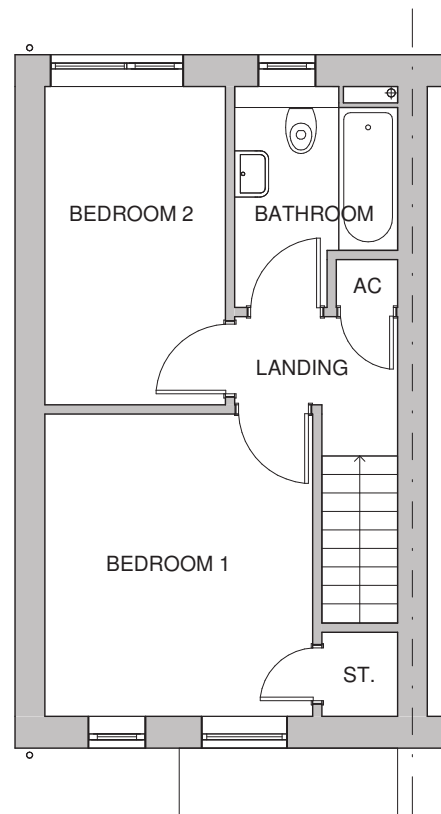
2 BEDROOM SEMI-DETACHED HOUSE



Ground Floor

Room dimensions

Living	4.20m x 2.48m 13'9" x 8'2"
Kitchen/Dining	4.20m x 3.30m 13'9" x 10'10"



First Floor

Room dimensions

Bedroom 1	3.19m x 3.60m 10'6" x 11'10"
Bedroom 2	2.15m x 3.79m 7'1" x 12'5"

Specifications: This information is for guidance only and does not form any part of a contract or constitute a warranty. Illustrations are of typical elevations and may vary. Floor plan are not drawn to scale. Room dimensions are subject to a +/- 50mm(2") tolerance and are based on a maximum dimensions in a each room. Please consult your sales advisor on site for specific elevations, room dimensions and external finishes.