

THE BANTOCK

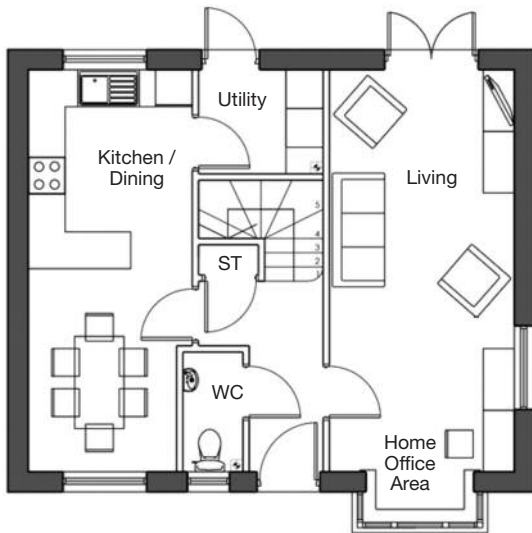
A modern detached 4 bedroomed home



The Bantock is a beautiful four bedroom detached home consisting of spacious living room features dual aspect windows making it very light and airy. Open plan kitchen/diner with separate utility room and a separate WC to the ground floor.

The first floor consists of four good sized bedrooms and a family bathroom. The property also benefits from an en-suite to the master bedroom. Parking is also included.

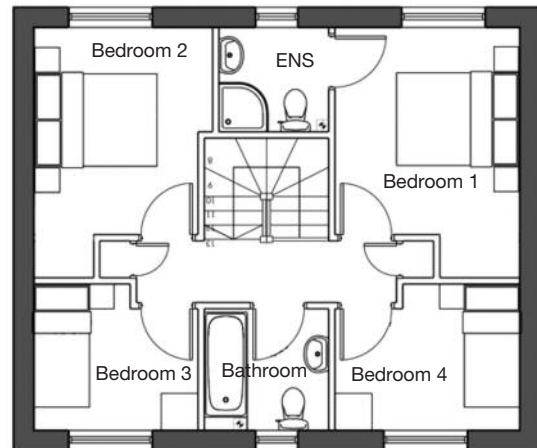
THE BANTOCK



Ground Floor

Room dimensions

| | |
|----------------|--------------------------------|
| | 4.82m x 3.77m |
| Kitchen/Dining | 15'9" x 12'4" |
| Living | 3.76m x 4.78m 12'4" x 15'8" |



First Floor

Room dimensions

| | |
|-----------|-------------------------------|
| | 3.70m x 2.97m |
| Bedroom 1 | 12'2" x 9'9" |
| Bedroom 2 | 2.62m x 3.52m 8'7" x 11'6" |
| Bedroom 3 | 2.10m x 2.43m 6'11" x 8'0" |

TOP SPEC LIST

- Turf front and rear
- Exterior lighting front and rear
- Close panel fencing around boundary
- Gas central heating
- Fully fitted Symphony kitchen with soft closer doors and drawers
- Built in stainless steel electric oven, gas hob and extractor hood
- Contemporary family bathroom
- Downstairs cloakroom
- Full height tiling to the bath and *shower cubicles (*where applicable)
- Allocated parking space

Specifications: This information is for guidance only and does not form any part of a contract or constitute a warranty. Illustrations are of typical elevations and may vary. Floor plan are not drawn to scale. Room dimensions are subject to a +/- 50mm(2") tolerance and are based on a maximum dimensions in a each room. Please consult your sales advisor on site for specific elevations, room dimensions and external finishes.