

THE ARCHMORE



The Archmore is a modern two-bedroom semi-detached home, offering a perfect balance of style, comfort, and practicality.

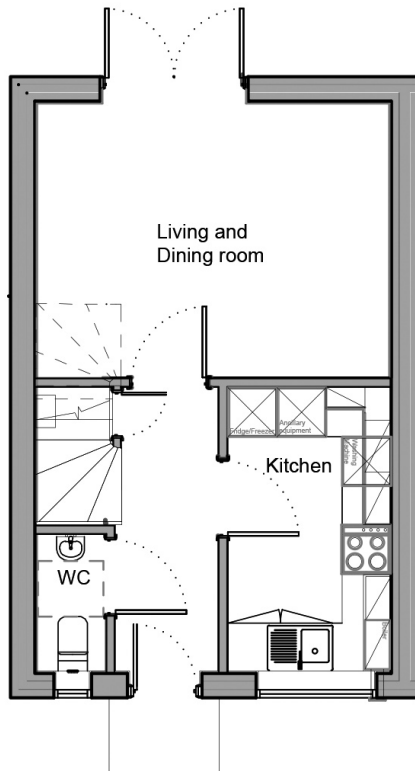
The ground floor features a welcoming entrance hall with a WC, a separate kitchen, and a bright, open-plan living and dining area with French Doors that open onto the patio and rear garden - ideal for entertaining or relaxing with family.

Upstairs, you'll find two double bedrooms and a family bathroom, making this home flexibly whatever your lifestyle.

The property also benefits from private off-street parking with EV charging facilities, ensuring it's ready for the future.

THE ARCHMORE

2 BEDROOM HOUSE



Ground Floor

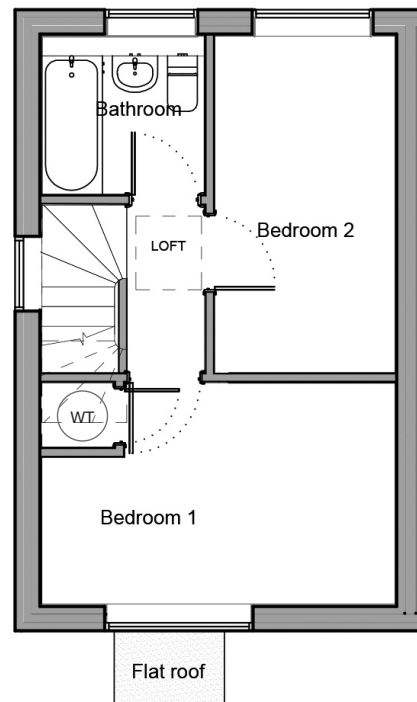
Room dimensions

Living / Dining

3.35m x 4.33m
10'11" x 14'2"

Kitchen

3.51m x 1.98m
11'6" x 6'6"



First Floor

Room dimensions

Bedroom 1

2.76m x 4.33m
9'0" x 14'2"

Bedroom 2

4.10m x 2.21m
13'5" x 7'3"

Specifications: This information is for guidance only and does not form any part of a contract or constitute a warranty.

Illustrations are of typical elevations and may vary. Floor plan are not drawn to scale.

Room dimensions are subject to a +/- 50mm(2") tolerance and are based on a maximum dimensions in a each room.

Please contact your sales consultant on site for specific elevations, room dimensions and external finishes.