

THE CALTHORPE



The Calthorpe is a three-bedroom home, offering flexible living spaces perfect for modern living.

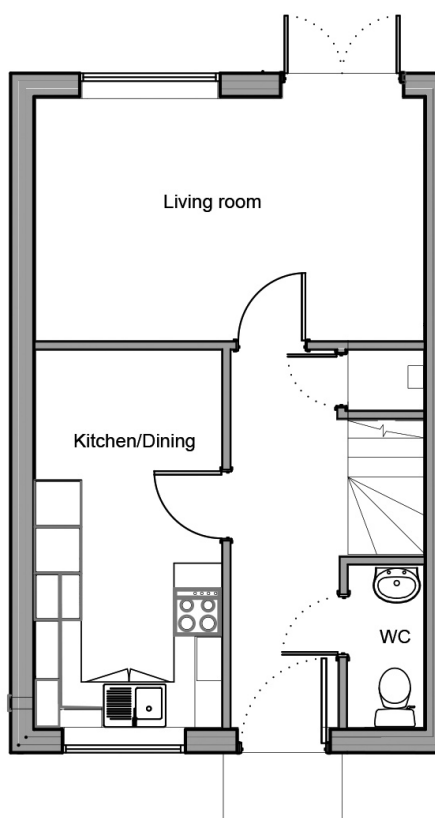
The ground floor features a bright, open-plan kitchen and dining area, complemented by a living room with French doors opening onto the rear patio and garden. The property has the benefit of a WC on the ground floor.

Upstairs, there are three bedrooms. The main bedroom includes its own en-suite shower room, while the others are served by a family bathroom.

With private off-street parking and EV charging facilities.

THE CALTHORPE

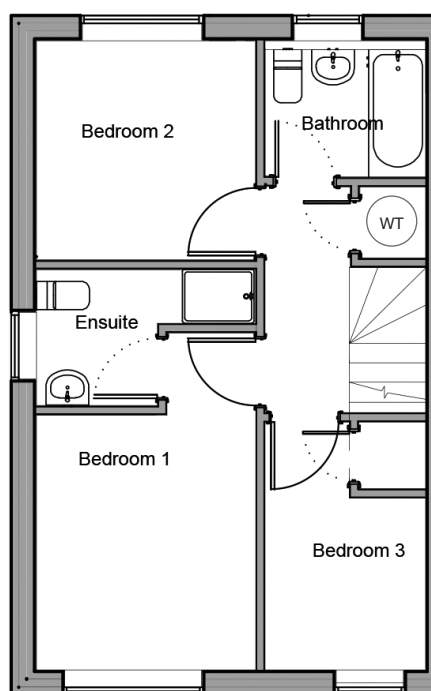
3 BEDROOM HOUSE



Ground Floor

Room dimensions

Living Room	5.00m x 3.13m 16'5" x 10'3"
Kitchen / Dining	2.39m x 4.85m 7'10" x 15'11"



First Floor

Room dimensions

Bedroom 1	2.81m x 3.27m 9'2" x 10'8"
Bedroom 2	2.81m x 2.84m 9'2" x 9'3"
Bedroom 3	2.06m x 2.20m 6'9" x 7'2"

Specifications: This information is for guidance only and does not form any part of a contract or constitute a warranty.

Illustrations are of typical elevations and may vary. Floor plan are not drawn to scale.

Room dimensions are subject to a +/- 50mm(2") tolerance and are based on a maximum dimensions in each room.

Please contact your sales consultant on site for specific elevations, room dimensions and external finishes.