

THE CONISTON



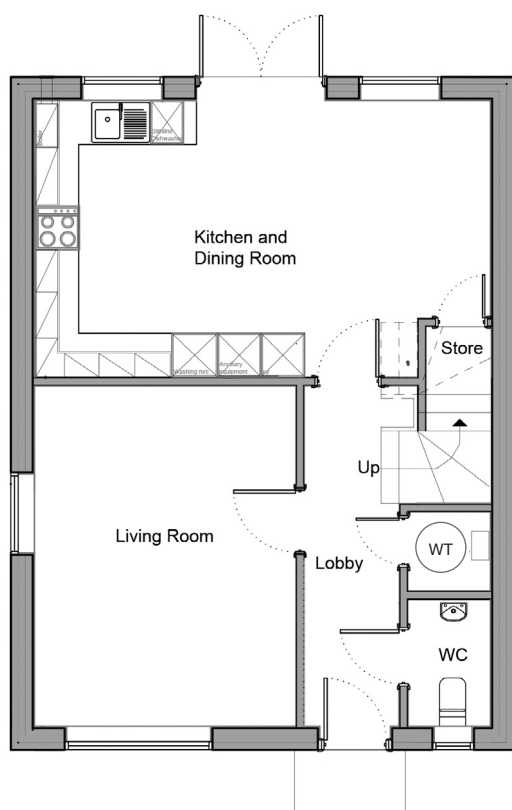
The Coniston is a four-bedroom detached home, ideal for both comfort and modern living.

The ground floor offers an open-plan kitchen and dining area with French doors leading to the rear patio and garden. A separate living room, WC, and storage space complete the downstairs.

Upstairs, you'll find four bedrooms, the main bedroom features its own en-suite with shower, while the others are served by a modern family bathroom. The property also includes private off-street parking with EV charging facilities.

THE CONISTON

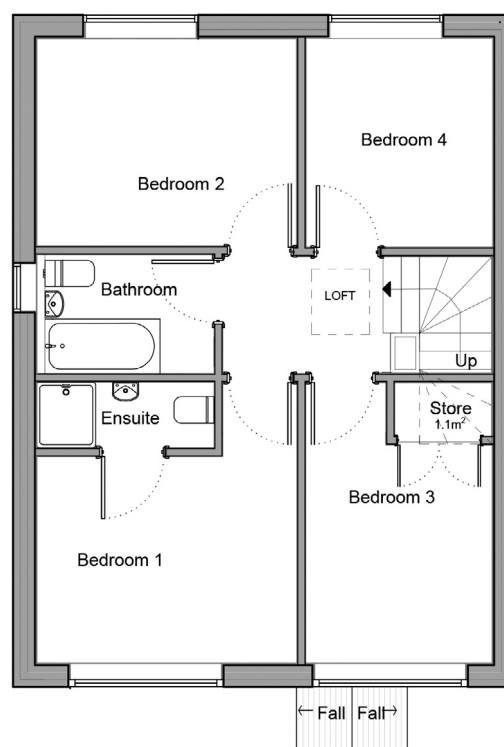
4 BEDROOM HOUSE



Ground Floor

Room dimensions

Living Room	4.73m x 3.63m 15'6" x 11'11"
Kitchen / Dining	3.81m x 6.31m 12'6" x 20'8"



First Floor

Room dimensions

Bedroom 1	2.95m x 3.62m 9'8" x 11'10"
Bedroom 2	2.91m x 3.62m 9'6" x 11'10"
Bedroom 3	3.03m x 2.57m 9'11" x 8'5"
Bedroom 4	2.57m x 2.91m 8'5" x 9'6"

Specifications: This information is for guidance only and does not form any part of a contract or constitute a warranty.

Illustrations are of typical elevations and may vary. Floor plan are not drawn to scale.

Room dimensions are subject to a +/- 50mm(2") tolerance and are based on a maximum dimensions in a each room.

Please contact your sales consultant on site for specific elevations, room dimensions and external finishes.