

THE LOCKWOOD



The Lockwood is a four-bedroom detached home, offering versatile living space perfect for families.

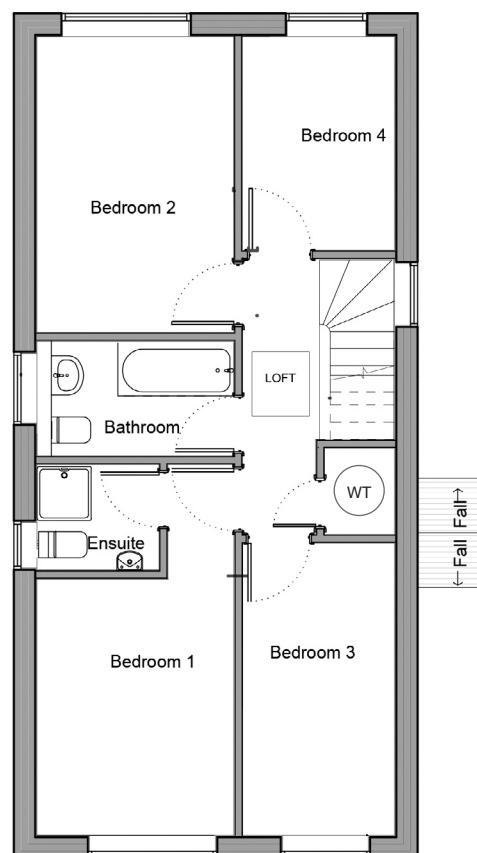
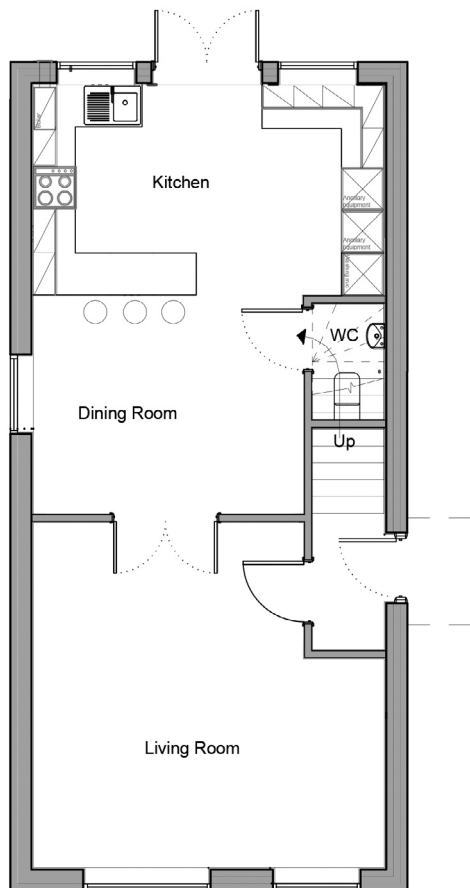
The ground floor offers a living room with French doors that lead into a kitchen and dining area, which also opens onto the rear garden through a second set of French doors. A WC completes the downstairs layout.

Upstairs you will find four bedrooms, the main bedroom features its own en-suite shower room, while the others are served by a modern family bathroom.

The Lockwood also benefits from private off-street parking with EV charging facilities.

THE LOCKWOOD

4 BEDROOM HOUSE



Ground Floor

Room dimensions

Living Room	4.92m x 4.96m 16'1" x 16'3"
Kitchen	2.99m x 4.96m 9'10" x 16'3"
Dining Room	3.10m x 3.81m 10'2" x 12'6"

First Floor

Room dimensions

Bedroom 1	3.48m x 2.72m 11'5" x 8'11"
Bedroom 2	4.11m x 2.72m 13'6" x 8'11"
Bedroom 3	4.08m x 2.11m 13'4" x 6'11"
Bedroom 4	2.96m x 2.11m 9'8" x 6'11"

Specifications: This information is for guidance only and does not form any part of a contract or constitute a warranty.

Illustrations are of typical elevations and may vary. Floor plan are not drawn to scale.

Room dimensions are subject to a +/- 50mm(2") tolerance and are based on a maximum dimensions in a each room.

Please contact your sales consultant on site for specific elevations, room dimensions and external finishes.